

62.71

# Wholesale Dahlia List

LIBRARY  
REC  
★ DEC 2 - 1953 ★  
of Agriculture



DEEP VELVET - 10" FD

1954

*Compton's* DAHLIA FARM  
BORING, OREGON

## *To Our Customers:*

To insure your satisfaction and that of your customers we take pride in selecting only choice tubers for your order. Each tuber is individually inspected just prior to shipping and is carefully packed to insure satisfactory delivery.

### GUARANTEE

We guarantee our dahlia tubers to be true to name and of highest quality. If stock is not completely satisfactory when received, return same at once and your money will be promptly refunded. We want you to be completely satisfied and if for some reason you do have a complaint please advise us within 10 days of receipt of shipment.

### OUR FARM

We are located 20 miles southeast of Portland on Mt. Hood highway, U.S. 26. Visitors are always welcome to inspect our plantings and handling facilities. Blooming time from mid-August to late October.

### STORAGE

Our dahlia clumps are washed clean and separated at digging time. Ventilated storage is held a near constant 50 degrees F. Fungicides are used to control damaging molds.

### CULTURE

Culture varies with locality but a few things are constant in all areas. Plant dahlia tubers about 5 inches deep and horizontal in area of near full sunlight. Water heavily at planting time and thereafter as needed for optimum growth. Pinching the top terminal shoot from dahlia plant after four sets of leaves have developed will cause branching and development of more and better quality blooms without staking.

### WHEN ORDER ARRIVES

If freezing weather prevails along the shipping route it is a good idea to check your shipment at once for frost damage. If damage is evident contact your carrier agency at once and advise us of their decision. Present your invoice and carrier bill of lading to them for any claims. We ship by insured carriers and any claims for damage en route must be submitted to them. Store your dahlias in a cool dry place that has good ventilation. It is important to keep the tubers stored in their shipping medium or similar material to eliminate shriveling. When displaying the tubers for sale, display only a moderate number and keep the main supply covered. Do not display dahlias in sunlight or near a heating unit.

### TERMS AND CONDITIONS OF SALE

Prices are all F.O.B. Gresham, Oregon. New accounts please send cash with order. Net thirty days. No charge for packing materials or shipping containers. We ship via Express or Auto Freight unless otherwise instructed. We ship in lightweight wirebound or cardboard containers. If delivery by parcel post is desired please include sufficient postage with your remittance. Excess postage will be refunded.

COMPTON'S DAHLIA FARM



# Large Decorative Dahlias

**FD—FORMAL DECORATIVE**—Double flowers, full to the center, usually with flat petals, often rounded at the tips, and regular in arrangement.

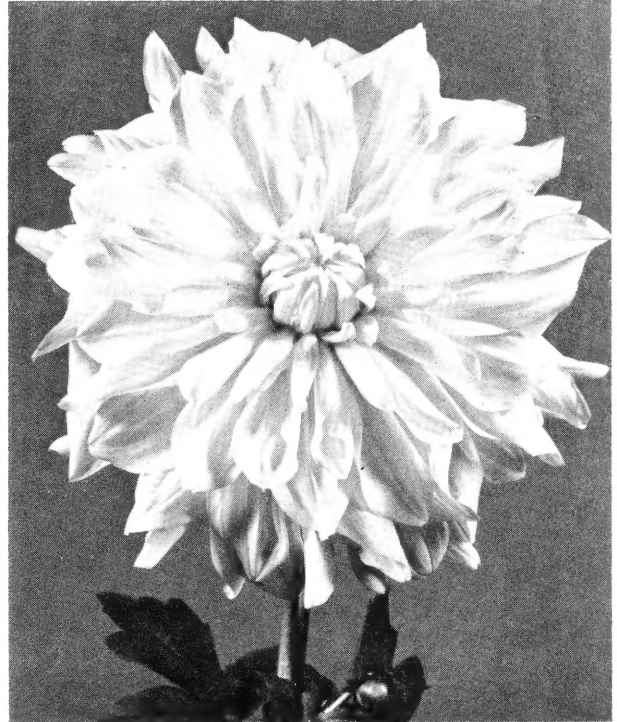
**ID—INFORMAL DECORATIVE**—Double flowers, full to the center, usually with long twisted petals, and often irregular in arrangement.

The large decorative type dahlias are the most popular and are available in most every color and blend but blue and a true black. Sizes under this heading range from six to 14 inches in diameter.

VARIETY	Ea. in lots of	
	25	100
<b>Aglow</b> (ID) 10" warm amber heavily suffused with scarlet to the center of each petal. Open grower with long stems ..... .	.30	.25
<b>Alice May</b> (ID) 10" pure white giant. Long canelike stems and a very vigorous grower. Flowers are very full centered ..... .	.25	.21
<b>Auverton</b> (ID) 10" deep rose with a delicate purple overcast. Bush is very massive and produces heavily ..... .	.30	.25
<b>Avalon</b> (FD) 8" canary yellow that is old but still among the better characterized dahlias. Stems are ideal and the bush very nice ..... .	.20	.16
<b>Azura</b> (ID) 12" giant clear lilac. Very vigorous exhibition variety ..... .	.22	.18
<b>Blue River</b> (FD) 10" medium lavender with an overall silver sheen and with silver reverse. Large and very showy ..... .	.22	.18
<b>Butterfly</b> (ID) 10" soft blend of henna orange with orchid reserve on the petals. Color is very unusual and showy. Low bush ..... .	.30	.25
<b>Caroline Kernochan</b> (ID) 8" dazzling color combination of lemon yellow to the base of each petal with heavy blusa or deep rose to the edges. Petals twist and curl ..... .	.35	.30
<b>Century of Progress</b> (FD) 10" clear elks purple of exceptional sheen and richness. Medium height and very vigorous ..... .	.22	.18
<b>Cherokee Brave</b> (ID) 12" giant rich oxblood red that holds its color well in the sun. Naturally a very large grower ..... .	.30	.25
<b>Cinnamon Beauty</b> (ID) 10" clear cinnamon on long tall stems. A very rich fall color and very showy in the garden ..... .	.25	.21
<b>Claire Fleetwood</b> (ID) 10" clear orchid on medium to low bush ..... .	.22	.18
<b>Clara Carder</b> (ID) 12" giant cyclamen pink on low to medium bush. Blooms are naturally very large and showy ..... .	.22	.18

**NOTICE:** Ten Tubers of a variety at the 25 rate, 50 at the 100 rate. Write for larger quantity prices. No less than 5 of a variety.

ALL STOCK SHIPPED ON AN APPROVAL-WHEN-RECEIVED BASIS WITH AN UNCONDITIONAL GUARANTEE OF QUALITY AND BEING TRUE TO NAME



CROYDON GLORY—FD



CLARIAM KELTON—ID

VARIETY	Ea. in lots of	
	25	100
<b>Clariam Kelton</b> (ID) 10" flame red blended with yellow and with streaked red and yellow reverse ..... .	.25	.21
<b>Commodore</b> (ID) 12" giant sulphur yellow on medium to low bush ..... .	.22	.18
<b>Commando</b> (FD) 10" giant Tyrian purple or deep lavender on very sturdy bush. Foliage is very vigorous and dark green ..... .	.22	.18
<b>Cornelia Pinchot</b> (ID) 10" blooms of deepest rose red. Blooms are very shaggy ..... .	.22	.18
<b>Croydon Glory</b> (FD) 12" mammoth lemon yellow. Bush is very open and flowers supported on good stem. Fine garden show ..... .	.22	.18
<b>Croydon Chief</b> (ID) 10" blooms of medium lavender with a heavy suffusion of rose. Blooms are very thick and dense ..... .	.22	.18
<b>Croydon Masterpiece</b> (FD) 12" giant, Majolica orange, lightly suffused jasper red. One of the largest and best habit dahlias we have ever seen. Blooms grow to 12 inches without disbudding or special care ..... .	.75	net
<b>Croydon Monster</b> (ID) giant cinnamon with gold that has been grown to 15 inches across. Bush is medium ..... .	.30	.25
<b>Darcy Sainsbury</b> (FD) 10" pure white. Perfect blooms face from canelike stems. Growth is very regular and vigorous ..... .	.25	.21
<b>Deep Velvet</b> (FD) 10" giant deep velvet red to near black. Massive grower and near perfection for sheer beauty ..... .	.35	.30
<b>Dixie Winedot</b> (ID) 10" white wavy petals flecked and dotted deep rose. Winner of many medals and among the very best bicolors ..... .	.35	.30

# LARGE DECORATIVE DAHLIAS, Cont.

VARIETY	Ea. in lots of	
	25	100
<b>El Rub'o</b> (ID) 10" shaggy giant of rich ruby red with purple overlay. Naturally large, this flower draws attention wherever shown.....	.25	.21
<b>Gallant Fox</b> (FD) 8" dark claret red on medium to low bush.....	.16	.14
<b>Haslerova</b> (FD) 8" creamy white flecked and splashed purple. A low grower producing an almost solid color in the row.....	.30	.25



CROYDON MASTERPIECE—FD



LOIS WALCHER—FD

VARIETY	25	100
	Ea. in lots of	
<b>Hills Supreme</b> (ID) 8" clear rose pink. Very good stems and a good keeper when cut.....	.22	.18
<b>Jane Cowl</b> (ID) 8" warm buff and old gold. An old dahlia favorite.....	.22	.18
<b>Joan Ferez</b> (ID) 10" seedling of Jane Cowl. Canary yellow lightly suffused rose red. Very vigorous bush.....	.22	.18
<b>Kelvin</b> (ID) 12" delicate blend of pink and old rose. This dahlia is almost too big to be real. Leaves are like platters.....	.45	net
<b>King David</b> (FD) 10" deep full blooms of rich petunia purple. Color is exceptional and does not fade. Very early to bloom.....	.30	.25
<b>Links Blue Triumph</b> (FD) 10" violet mauve that is very similar to Blue River only slightly larger.....	.25	.21
<b>Lois Walcher</b> (FD) 8" true bicolor of rich pansy purple, heavily tipped white. Exceptionally showy and seldom reverts.....	.22	.18
<b>Marshall's Pink</b> (FD) 6-8" soft mallow pink cutflower that is so delicate in coloring that it appears to glow. Choice.....	.22	.18
<b>Mayfair</b> (ID) 10" deep shaggy bloom of blood red. Variety turns semi-cactus late in season.....	.22	.18
<b>Mayor Otis</b> (ID) 12" giant copper and bronze. Everything about the dahlia is big. Bush is massive and the blooms ideal.....	.22	.13
<b>Michael Black</b> (ID) 10" velvety rhodamine purple that resists fading well. Vigorous and healthy in all ways.....	.25	.21
<b>Mme. Geo. LeBoutillier</b> (ID) 12" this giant deep red still collects as much praise as about anything else on the farm.....	.18	.14
<b>Monarch of the East</b> (ID) 12" old gold. Blooms face skyward from long stems with petals coming down to hide stems. Choice.....	.25	.21
<b>Mother Koenig</b> (ID) 10" shrimp pink blending to yellow center. Very deep, full blooms produced on very handsome bush.....	.30	.25
<b>Mrs. James Albin</b> (FD) 6" clear lemon yellow on medium to low bush. Flowers very compact and well out of foliage.....	.22	.18
<b>Mrs. Wm. Knudsen</b> (FD) 6" white that is a florist favorite. Stems are long and wiry and are ideal for wedding baskets.....	.22	.18
<b>New York Market</b> (FD) 6" pure white with orchid tint to the center. A naturally tall grower with fine stems for cutting.....	.25	.21
<b>Oriental Glory</b> (ID) 8" rich blend of fall shades. Bush is low and produces very heavily.....	.22	.18
<b>Pink Giant</b> (ID) 8-10" bright Tyrian pink. Long erect stems hold blooms facing. Strong rugged bushes with heavy foliage.....	.25	.21
<b>Prince of Persia</b> (FD) 10" bright scarlet growing out of strong medium bush. Richness of color is very striking.....	.22	.18



HASLEROVA—FD

## LARGE DECORATIVE DAHLIAS, Cont.

VARIETY	Ea. in lots of	
	25	100
<b>Reverend Pugh</b> (ID) 12" bright pure orange that is as dazzling as a dahlia can get and still be real. Low grower	.30	.25
<b>Royal Pennant</b> (ID) 8" rich royal purple on long canelike stems. Too soft for cutting but a terrific splash of garden color	.22	.18
<b>Santa Claus</b> (ID) 8" clear bicolor of rich orange and white. Petals curl and twist and blooms are held facing skyward on very nice stems	.25	.21
<b>Sellwood Glory</b> (FD) 8" color is wine to purple with speckles and splotches of white suffusing to a white tip. Reverse of petals has a definite silver sheen. Really a different dahlia from anything else on the market	.50	net
<b>September</b> (ID) 8" tangerine orange with soft scarlet suffusions. Very nice stems and a fine decorator for fall scenes	.25	.21
<b>Silver Glamour</b> (ID) 12" striking orchid purple giant with each petal edged silver. Full centered blooms on rugged bush	.35	net
<b>Sonja</b> (FD) 6" rich fuchsia and wine that is outstanding in all ways. A very early bloom that stays a mass of bloom all season and one of the very best cutflowers in its class	.25	.21
<b>The Universe</b> (ID) 10" deep oxblood red with a definite rose cast. Foliage is very dark and blooms are shaggy and full	.22	.18
<b>Thomas Edison</b> (FD) 6" royal purple. This dahlia is very old but still is in considerable demand	.22	.18
<b>Thunderbolt</b> (FD) 8" rich deep crimson with black center. A very striking dahlia with fine substance for cutting	.30	.25
<b>Town Topic</b> (ID) 10" blooms of rich violet purple often with white tips. Very tall vigorous grower	.22	.18
<b>Victory</b> (FD) 6" clear salmon pink with yellow reverse. Long canelike stems with blooms held facing. Nice for cutting	.30	.25
<b>White Abundance</b> (FD) 10" pure white on very tall bush. Nice stem	.22	.18
<b>Windlassie</b> (ID) 10" pure white that still is unbeaten for real dahlia finery. This white is without exception the nicest large white grown commercially. Bloom, stem and foliage are as near to perfection as is possible to find in a dahlia	.35	.30
<b>William Wiley</b> (FD) 6" rich caramel yellow. Grows rather low	.22	.18

See back page for **POMPONS** and **Seed Store Collections**



MAYOR—OTIS—ID

## Cactus Dahlias



BERGER'S MASTERPIECE—IC

VARIETY	Ea. in lots of	
	25	100
<b>Alcazar</b> (SC) 10" giant reddish purple with silver reverse that gives the bloom a bicolor appearance. Medium bush, choice	.35	.30
<b>All American</b> (SC) 8" mulberry rose suffused salmon. Medium to low bush. This dahlia creates much attention	.30	.25
<b>Animato</b> (IC) 4" incurved of delicate shell pink. Low bush produces a mass of cutflowers. Stems are very good	.22	.18
<b>Aristos</b> (SC) 10" violet purple cactus on medium to tall bush. This dahlia is very showy and often has white tips	.30	.25
<b>Bali</b> (C) 6" clear salmon pink cutflower. Bloom is very full and regular on very vigorous bush	.22	.18
<b>Ballay Rouge</b> (IC) 8-10" full regular blooms of rich red supported on long wiry stems. Bush is rather tall but compact	.40	.35
<b>Bergers Masterpiece</b> (IC) 8" This smoky pink cactus is the queen of all the pink cactus group. Outstanding for cutting and show purposes. Long stems and perfect spider blooms	.35	.30
<b>Dubonnet</b> (C) 4" dubonnet red cactus that is very hedgelike in bush appearance and with many delicate blooms. Nice for cutting	.22	.18
<b>Faithful</b> (SC) 8-10" semicactus white that is produced on tall strong bush. Bush and foliage are very vigorous	.25	.21
<b>Fernie Triumph</b> (C) 8" brilliant Chinese red cactus that is really outstanding. Wonderful stem and bush characteristics	.35	net
<b>Figaro</b> (SC) 10" golden yellow penciled scarlet. A very showy and robust dahlia for garden or exhibition	.25	.21
<b>Golden Jupiter</b> (IC) Definite petal division of soft apricot to the outside and clear golden in the center. A very fine dahlia	.35	.30
<b>Hestia</b> (C) 4" florist jewel. Everything about this little peach cactus is ideal. Bloom is full and deep, produced on wirelike stems. Bush blooms very early and continues heavily till frost	.22	.18
<b>Hylas</b> (C) 6" another florist special in delicate coral rose. Full petaled and on perfection stem and bush. Very recent from Holland	.35	net
<b>Jane Lausche</b> (SC) 10" rosy mauve with each outer third of the petals tipped pure white. A very striking exhibition dahlia	.30	.25
<b>Jersey Dainty</b> (C) 6-8" pure white straight cactus. Fine stem and bush rank this dahlia well up for show and florist work	.25	.21

## CACTUS DAHLIAS, Continued

VARIETY	Ea. in lots of	
	25	100
<b>Lombaert's Violet</b> (C) 4" pure deep violet cutflower. A very heavy producer of bloom and a very choice color for florists.....	.25	.21
<b>Loveliness</b> (SC) 6" deep peach with a deeper center. Blooms early in the season and can be cut very nicely.....	.25	.21
<b>Market Glory</b> 4" straight cactus of clear pink overlaid with purple to give it a very intense pink effect. Wonderful for cutting.....	.22	.18
<b>Mary Taylor</b> (C) 8" honey or taffy yellow suffused phlox pink. Wonderful stem and bush. A really nice dahlia for cutting.....	.25	.21
<b>Mme. Juissant</b> (C) 6" Bishop's violet with tint of silver throughout. A very delicate cutflower and exhibitor.....	.25	.21
<b>Mother Aarston</b> (C) 5" spider cactus in rich chamois bronze. This dahlia blooms early and forms a regular hedge of bloom that continues till frost. Would make a wonderful border.....	.35	.30
<b>Mustang</b> (C) 8-10" bright pink of exceptional form. This dahlia has been very popular and in very high demand. Lacelike foliage.....	.25	.21
<b>Nagels Orange</b> (C) 6" pure rich orange. A very massive bush produces heavily throughout the season. Fine for cutting.....	.25	.21
<b>Nancy Ann Mitchell</b> (C) 8" currant red cactus that grows tall and has natural long stems. Bush is rangy and should be staked.....	.25	.21
<b>Nicky K.</b> (C) 5" brilliant scarlet cactus of finest cactus form. Full, deep blooms are ideal for cutting and keeps well also.....	.30	.25
<b>Oakleigh Champion</b> 8" blooms of burnt orange and soft pink with lemon yellow shadings. Lacinated petals. Medium bush.....	.30	.25
<b>Roselyn Straight</b> (SC) 10" blooms with general appearance of deep apricot yellow shaded and streaked scarlet. Very massive.....	.30	.25
<b>Sabine</b> (C) 4" elite cutflower. Deep coral to soft tangerine at the center. Early and very profuse.....	.30	.25
<b>Satan</b> (SC) 10" giant red that is still among the showpieces. A really big dahlia with rugged growth habits.....	.25	.21
<b>Somerton Lavender</b> (C) 6-8" bright lavender cactus on medium to low bush. Blooms very heavily from quite early in season.....	.30	.25
<b>Thisledown</b> (IC) 6" an early white that is very lacy in bloom and foliage as well. A rather tall grower with good stem.....	.25	.21

See back page for POMPONS and Seed Store Collections



ALCAZAR - SC

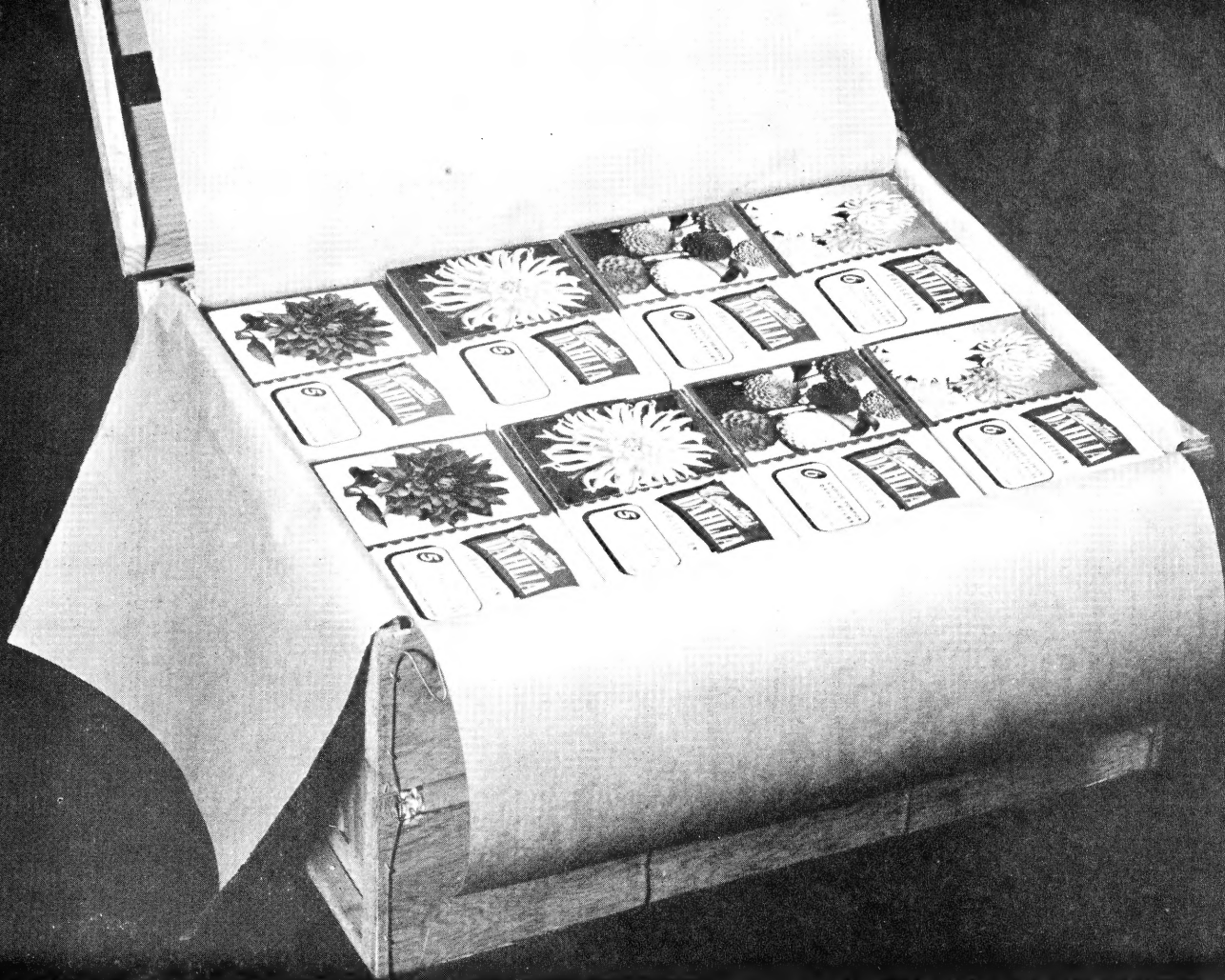


YELLOW SPECIAL - SC

VARIETY	Ea. in lots of	
	25	100
<b>Tip</b> (C) 4" pure canary yellow cactus that is tops for the early cutflower market. Blooms are very good keepers and are produced on very good stem.....	.22	.18
<b>Virginia Rute</b> (SC) 10" giant oxblood red grown on tall vigorous bush. Despite the size the bush rarely needs to be staked.....	.25	.21
<b>Yellow Special</b> 5" deep clear yellow cactus cutflower. A little larger than Tip and later with every good quality expected in a good cut dahlia.....	.25	.21
<b>Yellow Spiral</b> (IC) 10" deep yellow incurved that is very handsome on the showtable. Blooms face perfectly.....	.25	.21

## Miniature Ball and Waterlily

<b>Baby Fonteneau</b> (FD) 3" rose cutflower. This little dahlia blooms among the first in the field and continues till frost.....	.22	.18
<b>Gerrie Hoek</b> (waterlily) 4" rich pink to the center becoming very pastel to the outer edges. Dainty and very popular.....	.22	.18
<b>Goldfazen</b> (FD) 3" striking bicolor combination of rich rust with gold spatter becoming solid to the center. Long stems that are ideal for cutting.....	.22	.18
<b>Granite Falls</b> (collarette) rich red with cream florets.....	.22	.18
<b>Helly Boudewijn</b> (waterlily) pure white cutflower on wonderful stems for cutting. Blooms very profusely.....	.22	.18
<b>Ike</b> (FD) 3" deep ruby red on long wiry stems. Huge bush is always loaded with bloom.....	.22	.18
<b>Little Wisteria</b> (FD) 4" compact blooms of white with overall flush of orchid. Low bush is very prolific.....	.22	.18
<b>Orange Glow</b> (Ball) 4" pure bright orange ball on excellent stem for cutting. A very nice dahlia for florists.....	.22	.18
<b>Queen of Yellows</b> (Ball) rich canary yellow ball on very productive bush.....	.18	.14
<b>Target</b> (ID) 3" orange that is ideal for border work. Bush grows about 3 feet tall and is a mass of color from early in the season.....	.22	.18
<b>Tippy</b> (Ball) 4" stately honey yellow tipped bronze. Very nice stems for cutting.....	.22	.18
<b>White Fawn</b> (FD) 4" pure white that is another solid hedgelike grower with a solid mass of bloom from early in the season.....	.18	.14
<b>Orchid Lady</b> (FD) 4" pure orchid on huge branching bush.....	.22	.18



## *Dahlia Collections*

### ALL GUARANTEED

Now you can offer all four types in packaged collections—Large Decorative, Miniature, Pompon, plus the striking Cactus varieties.

Cartons are finished in three handsome colors and a natural color representation is on each to indicate type. Cartons are packed with dry peat and sawdust to insure keeping.

Collection stock receives the same handling as does our bulk stock, being individually selected for live eyes and quality.

Cultural guides included in each collection.

Light weight wooden shipping case insures safe delivery. Sold by the case only.

**EACH CASE CONTAINS 32 COLLECTIONS AND MAY BE ORDERED IN A SOLID CASE OF ONE TYPE OR IN QUANTITIES OF EACH AS YOU DESIRE.**

**PRICE PER CASE \$30.00**

#### **LARGE DECORATIVE COLLECTION**

5 tubers—all large.  
Pink, White, Lavender, Red, and Bronze or Yellow.

#### **MINIATURE COLLECTION**

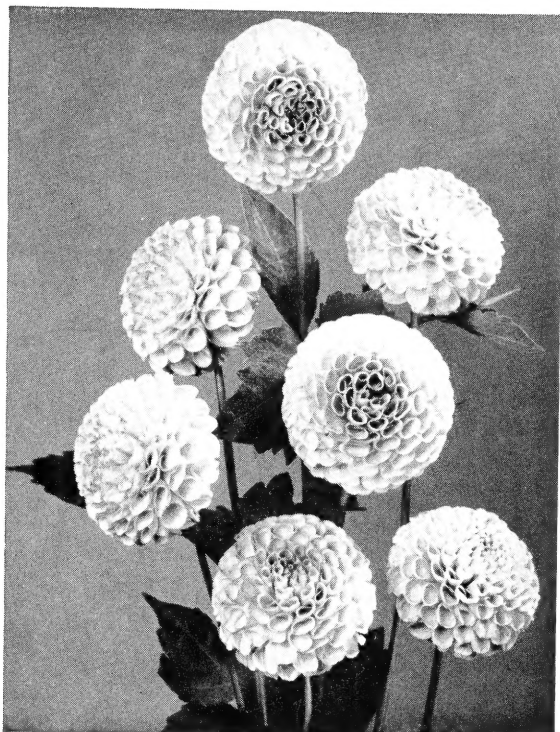
6 tubers—Waterlily, Ball and Miniature.  
Separate colors, distinct and different.

#### **POMPON COLLECTION**

6 tubers  
Assorted colors, each one different.

#### **CACTUS COLLECTION**

5 tubers  
5 varieties, each one different.



## Pompon Dahlias

- Admiral Dot** Delicate pastel orchid with a darker dot in the center.
- Amber Queen** Color is amber to deep gold. Heavy producer.
- Arthur Kerley** A deep ruby red pom that is ideal for florists.
- Betty Ann** Clear pink. Blooms are small and dainty.
- Brunet** Dark red pom on medium bush. Good stems for cutting.
- Catherine** Bright primrose yellow. Very vigorous grower.
- Challenge** Medium red with white markings.
- Chita** Light canary yellow that is ideal for cutting. Very good stems.
- Doria** Dark smoky maroon cutflower. Blooms are small and very compact.
- Gertrude** Low growing blood red. Bush is very sturdy.
- Glow** Color is old rose. A very good flower for cutting.
- Hazel Dell** Lavender cerise with darker center.
- Hedwig Polwig** Rather large red and white bi-color.
- Helen Anita** Delicate little lavender pom with clear white center.
- Honey** Rich honey yellow with a suffusion of red. Very choice for cutting.
- Indian Chief** Deep wine red with white tips.
- Ivan** Large clear cerise. Medium to low bush.
- Joe Fette** A very nice pure white cutflower produced on choice stems.
- Libby Rohr** A very prolific reddish purple. Very heavy producer on fine stem.
- Little Elk** Rich bronze on tall bush. Very good stems for cutting.
- Mary Munns** Clear lavender that is fine for cutting. Bush is very vigorous.
- Mimosa** Color is mimosa yellow. Stem and bush are ideal.
- Minnie Mells** Purple and white with a purple center. Fine stems.
- Morning Mist** White with a tint of lavender. Very good bush.
- Red Warrior** Rich crimson pom that is produced on choice stems.
- Reginald** Rich burgundy red cutflower.
- Rosa Wilmot** Large pom of soft pastel pink. Low grower.
- Taakas Purple** Medium purple on best formed bush. Good stems.
- Tip Top** Rich raspberry red on medium to low bush.
- Yellow Gem** Canary yellow pom on strong vigorous bush. Very good cutflower.
- Peggy Wood** A bicolor pom of orange and white. Good bush and stem.

## Pompon Collections

The compact little pompons are ideal for decoration arrangements in the home and are very popular for this purpose.

They are available in a wide color range and make a handsome floral addition for backgrounds and borders.

### BULK COLLECTION

15 Tubers Each of 5 Varieties — All Labeled  
Our Selection of Varieties

75 TUBERS PER COLLECTION  
for..... \$10.00

### ALL POMPONS ARE PRICED THE SAME

IN LOTS OF 25 THE PRICE EACH IS..... 16c  
IN LOTS OF 100 THE PRICE EACH IS..... 14c

## Decorative Collections

### NAMED VARIETIES

15 each of 5 varieties of large decorative type dahlias. Each variety labeled and packed in peat and sawdust to insure protection. Red, Pink, White, Lavender and Bronze or Yellow. All are standard listed varieties.

The above assortment for..... \$14.00  
25 each of 5 varieties for..... \$20.00

## Cactus Collections

### NAMED VARIETIES

15 each of 5 varieties of cactus type dahlias. Each variety labeled and packed in peat and sawdust to insure protection. Red, Yellow, Purple, Bronze and White.

Above assortment..... \$15.50

TRY OUR DAHLIA TUBERS IN BULK FOR YOUR COUNTER TRADE

*Compton's* DAHLIA FARM  
BORING, OREGON